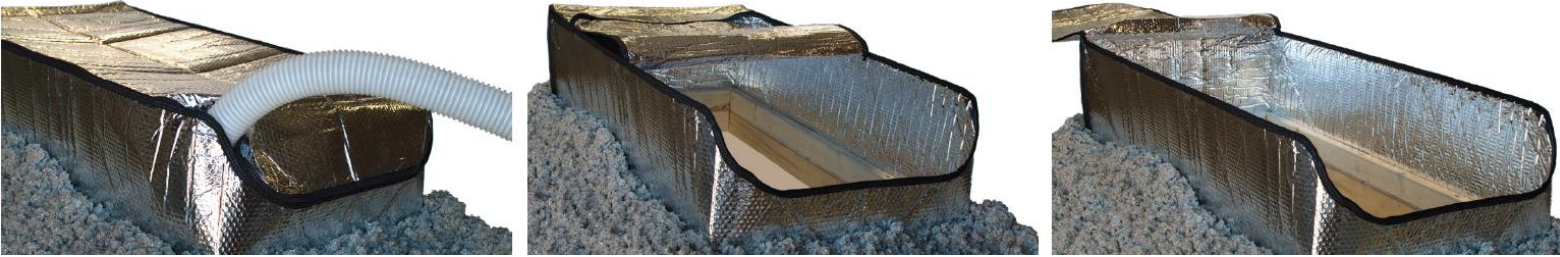




Crawl Space NINJA®

DIY Crawl Space Supply Store



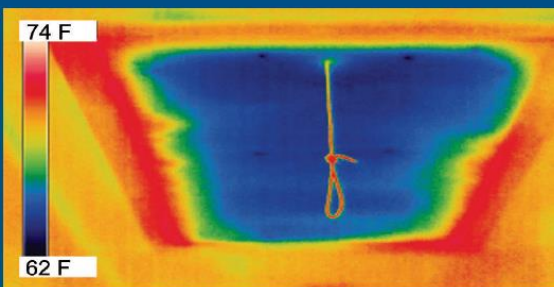
How Crawl Space Ninja's Attic Hatch Cover Works

Heat is transferred in three ways: conduction, convection, and radiation. Our reflective insulation attic stairway insulator functions by forming air spaces with layers of air bubbles and reflective foil. These spaces restrict air movement which reduces heat flow by convection. In addition to reducing heat transfer by convection, the high reflectivity and low emissivity of each reflective layer also reflects away up to 96% of radiant heat. Radiant heat transfer is all but eliminated.

Added to this is the fact that when our insulator is installed properly in the attic stairway opening, a 12" dead air space is created. In order to realize the highest R-Values, you must have dead air space on the reflective side of the insulator. Dead air space adds 1.2 R-Value per inch. The Attic Hatch Cover is the perfect complement to our radiant barrier, air sealing and insulation program.

Specifications:

- Nominal Thickness at 5/16"
- Fire Rating Class I / Class A (ASTM E84-09)
- Full Room Burn Pass (NFPA 286)
- Emissivity 0.04 (ASTM CI 371-04A)
- Temp Range -50°F to 180°F (ASTM C4 I I)
- Water Vapor Permeability 0.02 Perms (ASTM E96)
- Thermal Resistance R-15.2 (Heat Flow Down)
- Reflectivity 0.96 (ASTME903)
- Installs easily with only a staple gun
- Resistance to Fungi - Does not Promote Growth (ASTM CI 149)
- Pliability - No Cracking (ASTM CI 224-03)
- Bleeding/ De-lamination: None (ASTM CI 224-03)
- Corrosiveness Pass (ASTM D33 I 0-00)
- Available in SEVEN sizes:
 - 20"x20" 22"x30" 24"x54" 30"x30"
 - 26"x54" 30"x54" 30"x60"



The ASTM C236-1224 tests that determine a product's r-value yield the following results for Double Bubble Reflective Insulation: Down=R-15.2, Up=R-6.8, Horizontal=R-8.5.